



www.gilloarchery.it



[#GilloChangingTheGame](https://twitter.com/GilloArchery)

2023 CATALOG



LONG IS

GILLO Gold Medal's GT technology allows for the use of longer and more stable risers

Since there are bows that can be disassembled into three parts, the so-called Take Downs, the generic length offered for the riser has always been between 24" and 26", with the only existing variations always made to shorten the riser itself, at 23", 21", 19" or even at 17", but never to lengthen it. The limits towards longer risers were before processing technologies and then anchored to the idea that really long bows would have been inefficient if not used with draw lengths of over 31", not so rare in the world of archery. Then it became customary to define the length of the bow only in relation to the draw length, with the famous table still largely used today which establishes:

From 28" draw length up - 70" - 25" riser and long limbs

From 27" to 29" draw length - 68" - 25" riser and medium limbs

From 25" to 28" draw length - 66" - 25" riser and short limbs

From 22" to 26" draw length - 64" - 23" riser and short limbs

Too bad there are still countless combinations of draw length and body conformation that prevent in fact to stick to that table and infinite personal needs that would have always required other solutions. Robust builds and buxom women can in fact present interference between the angle of the string and the torso of the archer on longbows, as well as on the contrary fingers of considerable size can be too flattened by a bowstring that is too short. The traditional bow design, with the brace increasing as the length of the bow increased and the position of the pivot point constantly in the center of the geometry, brought the bows to an inevitable inefficiency as their length increases. In fact, therefore, the world of the Take Down bow has been limited for over thirty years at 90% on 25" risers.

"GILLO Gold Medal" already in 2014 has instead begun to reverse the trend, successfully recovering with the



#GilloCho



S BETTER

27" G1 riser the geometries already developed by the designers themselves in 2007 with the design of the then first 27" riser in the world, the Luxor 27. The key points of the G1-27 geometry then became the basis for the GT 27 and for the following GT 29 and GT 31. Basically:

- A) The pivot point is 1/2" higher than the geometric center of the riser, aiding Barebow use in String Walking,
- B) The degree of deflection is 35 mm for all GT risers from 23" up to 31", i.e. ALL risers work with the same angle of limbs and with the same brace, without loss of efficiency as the riser lengthens. In particular, characteristic B allows for the first time in the history of long risers to use them even with draw lengths limited to 27" even with a GT-29, with unparalleled advantages in terms of stability and efficiency of the bow, which can be used with shorter and therefore more performing limbs. Hence, current solutions become much more numerous depending on the shooting style and the range specific conformation of the archer.

The new usage table made possible by GT technology created by GILLO Gold Medal clearly shows the numerous solutions (in Green) now available to many archers who previously had to be limited to the canons combinations (in Yellow). For both Olympic bow and Barebow, many archers can now choose more efficient combinations with the use of long risers, which generally lead to conclusion that "Long is better".

Draw Length (")	Bow	Riser	Limbs
34+	76"	31"	Long(70)
33-32	74"	31"	Medium (68)
	74"	29"	Long(70)
	72"	29"	Medium (68)
	72"	27"	Long(70)
31-30	72"	29"	Medium (68)
	72"	27"	Long(70)
	70"	27"	Medium (68)
	70"	25"	Long(70)
29-27	70"	29"	Short (66)
	70"	27"	Medium (68)
	70"	25"	Long(70)
	68"	27"	Short (66)
	68"	25"	Medium (68)
26-23	68"	23"	Long(70)
	66"	25"	Short (66)
	66"	23"	Medium (68)
	64"	23"	Short (66)

Changing The Game



GT 27"-29"-31" LONG RISERS

GILLO risers declared long are designed for use at high draw length. The range of long risers includes: GT 27" ILF, GT 29" ILF and GT 31" with asymmetrical structure with 0.5 inch oversize on the bottom which can also favor the use in String Walking for Barebow.

GT 29" ILF and GT 31" ILF allow the use of weights dedicated GILLO in multiple vertical positions.



27"
FORMULA

27"
ILF

29"
ILF

31"
ILF



GT 33"

THE LONGEST RISER FORMULA



GT 25" ILF COMPATIBLE



The concept of riser that WETSUIT WITH THE ARCHER is what allows the GILLO riser to be the only possible choice for an ARCHER IN EVOLUTION.

The introduction of the GT system allows not only to undertake a more considered archery path, thanks to the management customizable to incredible levels of bow power, but it also allows you to customize the aesthetics of your riser over time, without necessarily having to change the riser itself. In 2021, color customization became available for pocket, already in the initial choice, which gives the possibility of owning a unique, special and CUSTOM MADE riser.



GT 25" ILF COMPATIBLE

CERAKOTE® SERIES

- Recurve & Barebow riser
- ILF compatible
- Floating limbs pocket allows over 30% poundage adjustment range
- Integrated shock absorbers
- 25" length, RH and LH versions
- Body and pockets machined from solid Aluminum bar
- **Cerakote® finish surface for body**
- Matte anodized finish for pockets
- Hard wood, Root color medium grip
- Approx. 1350 g total weight
- Dual color version RH: **Gold (KGO), Safety Orange (KSG), Sand (KSD), Dark Green (KDG), White (OWH), Fluo Green (KFG)**



The GT System





AMAZING COMBINATIONS

GT 25" FORMULA COMPATIBLE



In addition to a customization infinite between power, balance and aesthetics, it combines the possibility to transform and adapt pockets the type of limb you want use, so as not to having to change risers.

Test different materials on the same riser is the best way to address and evaluate each change you want or you must manage.

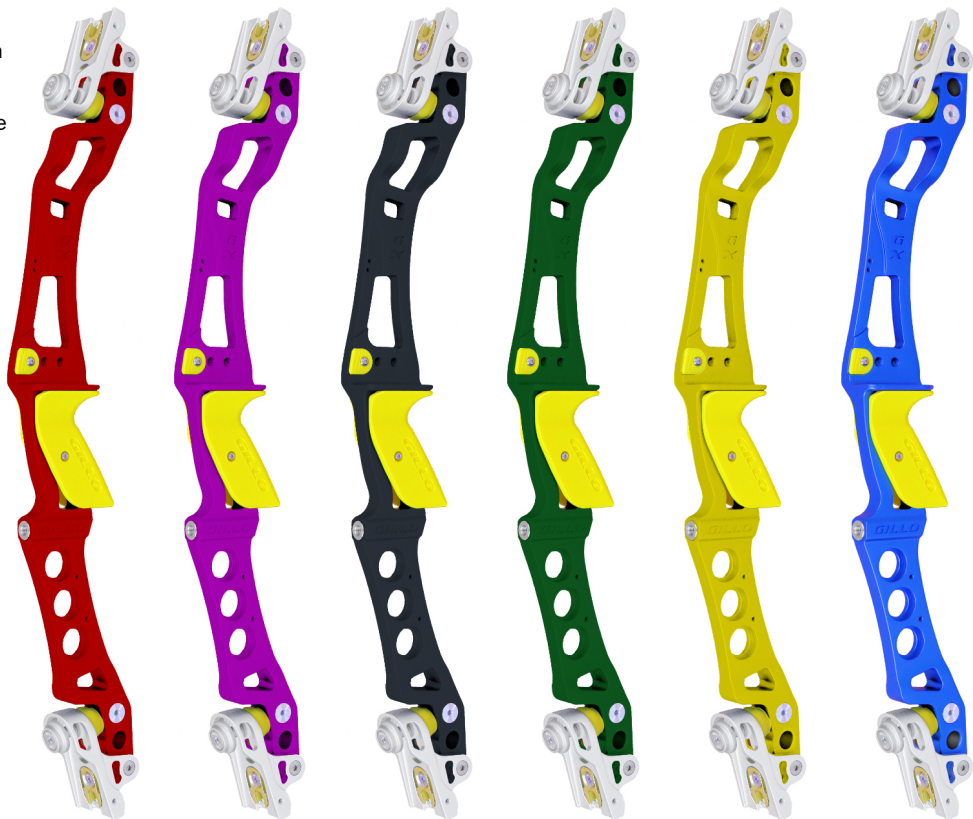


GX^{25"} ILF COMPATIBLE



The GX range, inspired by GT range, born from the need to allow who just approached our sport of not have to face constantly material changes e so keep spending.

The GX riser has a LIMITED WEIGHT, incredible excursion possibilities of poundage (maintains +-15% such as the GT riser), suitable for competitions of all levels and the all with a modern aesthetic and current.



For beginners, for those who don't want to or cannot lift excessive weights, for young people growing up...
...here is the riser created specially for them!



GT 19"-21"-23" SHORT RISERS

- Short GILLO GT risers are designed for hunting, traditional shooting and for use with moderate draw lengths.
- 19" ILF, 21" ILF, 21" Formula and 23" Formula are made with brass alignment plates and free firing capability grip with G05-WSP side wood plates.
- 23" ILF is ideal for target shooting with moderate draws, available in multiple bright colors.



G1 25" M



GQ 25" M-L

- The GQ riser is available in M and L versions
- The M version features: molded plastic grip, plastic 3D printed clicker plate, 1 central bushing for stab in screwing silver colored steel, silver colored preload.
- The L version includes: wooden grip, plate gold aluminum clicker, 5 bushings in gold colored steel, gold colored preload.
- Again available in two-tone version.



G4
BICOLOR
L VERSION



G4
L VERSION



G14
M VERSION



GT & GX 25" RISERS

COMPARISON CHART



GILLO GT & GX 25" Risers comparison chart

Lenght		25"					
Model	G3L 25I RH	G3L 25I LH	G3L 25F RH	G3L 25F LH	G12M 25I RH	G12M 25I LH	
Model ref	G03L-RSI-25-RH	G03L-RSI-25-LH	G03L-RSF-25-RH	G03L-RSF-25-LH	G12M-RSI-25-RH	G12M-RSI-25-LH	
Model Name	GT 25 ILF	GT 25 ILF	GT 25 Formula	GT 25 Formula	GX 25 ILF	GX 25 ILF	
Availability	Running Model	Running Model	Running Model	Running Model	Running Model	Running Model	
Hand	RH	LH	RH	RH	RH	LH	
Lenght	25"	25"	25.5"	25.5"	25"	25"	
Weight	1350	1350	1370	1370	1170	1170	
Riser material	Aluminium	Aluminium	Aluminium	Aluminium	Aluminium	Aluminium	
Technology	Milled	Milled	Milled	Milled	Milled	Milled	
Finishing	Sandblasted anodized	Cerakote®	Sandblasted anodized	Sandblasted anodized	Sandblasted anodized	Sandblasted anodized	
Limbs Pockets	Aluminium, Black (Gold) color	Aluminium, Black color	Aluminium, Black color	Aluminium, Black color	Aluminium, Silver color	Aluminium, Silver color	
Grip	Wood -Root finish	Wood or 3D Wood	Wood -Root finish	Wood or 3D Wood	Plastic or 3D Yellow Color,	3D Yellow Color,	
Clicker plates	Aluminium Gold color	Aluminium Gold color	Aluminium Gold color	Aluminium Gold color	3D Yellow	3D Yellow	
Limbs bolts	Aluminium, Black (Gold, Blue) color	Aluminium, Black (Gold) color	Aluminium, Black color	Aluminium, Black color	Aluminium, Black color	Aluminium, Silver color	
Neopren Springs	Black	Black	Black	Black	Yellow	Yellow	
Align plates	Aluminium	Aluminium	Aluminium	Aluminium	Aluminium	Aluminium	
Weigh holes Plugs	Optional up to 3 pairs	Optional up to 3 pairs	Optional up to 2 pairs	Optional up to 2 pairs	Optional up to 3 pairs	Optional up to 3 pairs	
Optional weights kit	G01-DK6 G03-DK2-TG G04-DK6 G05-DK2 G04-BW-03	G01-DK6 G03-DK2-TG G04-DK6 G05-DK2 G04-BW-03	G03-DK2-TG G05-DK2 G04-BW-03	G03-DK2-TG G05-DK2 G04-BW-03	G01-DK6 G03-DK2-TG G04-DK6 G05-DK2 G04-BW-03	G01-DK6 G03-DK2-TG G04-DK6 G05-DK2 G04-BW-03	
Optional Bare Bow Covers	G01-BW-01 G01-BW-02 G04-BW-04	G01-BW-01 G01-BW-02 G04-BW-04			G01-BW-01 G01-BW-02 G04-BW-04	G01-BW-01 G01-BW-02 G04-BW-04	
Optional V-Bar	GVB-03	GVB-03	GVB-03	GVB-03	GVB-03	GVB-03	
Riser sleeve	GRS-03-27	GRS-03-27	GRS-03-27	GRS-03-27			
Gold		Black/Gold		Black/Gold		Silver/Gold	
Silver	Red+Blue / Silver Red+Green/Silver		Red+Blue / Silver Red+Green/Silver				
Black	Gold / Black			Gold / Black		Silver / Black	
Grey	Black / Grey		Black / Grey	Black / Grey	Black / Grey	Silver / Grey	
Blue	Black / Blue Gold / Blue		Black / Blue	Black / Blue	Black / Blue	Silver / Blue	
Red	Black / Red Gold / Red		Black / Red	Black / Red	Black / Red	Silver / Red	
Pink	Black / Pink						
Purple	Black / Purple		Black / Purple	Black/Purple		Silver/Purple	
Safety Orange		Black/Safety Orange					
Orange	Black / Orange						
Green	Black / Green Gold / Green		Black / Green	Black / Green		Silver / Green	
Dark Green		Black/Dark Green					
Fluo Green		Black / Fluo Green					
Turquoise	Black / Turquoise						
		Black / Sand					
White		Gold / White					
Yellow	Black / Yellow Blue / Yellow						

Last updated: June, 12, 2023 - Information here in may vary without notice





LONG GT RISERS

COMPARISON CHART

GILLO GT Long Risers comparison chart

Lenght	31"	29"	27"			
Model	G3L 31I RH	G3L 29I RH	G3L 27I RH	G3L 27I LH	G3L 27F RH	G3L 27F LH
Model ref	G03L-RSI-31-RH	G03L-RSI-29-RH	G03L-RSI-27-RH	G03L-RSI-27-LH	G03L-RSF-27-RH	G03L-RSF-27-LH
Model Name	GT 31 ILF	GT 29 ILF	GT 27 ILF	GT 27 ILF	GT 27 Formula	GT 27 Formula
Availability	Running Model	Running Model	Running Model	Running Model	Running Model	Running Model
Hand	RH	RH	RH	LH	RH	RH
Lenght	31"	29"	27"	27"	27.5"	27.5"
Weight	1640	1530	1480	1440	1440	1440
Riser material	Aluminium 7075	Aluminium	Aluminium	Aluminium	Aluminium	Aluminium
Technology	Milled	Milled	Milled	Milled	Milled	Milled
Finishing	Sandblasted anodized	Sandblasted anodized	Sandblasted anodized	Sandblasted anodized	Sandblasted anodized	Sandblasted anodized
Limbs Pockets	Aluminium Gold color	Aluminium, Black color	Aluminium, Black color	Aluminium, Black color	Aluminium, Black (Gold) color	Aluminium, Black color
Grip	Wood, multicolor	Wood, multicolor	Wood, multicolor	Wood or 3D Wood	Wood-Root finish	Wood or 3D Wood
Clicker plates	Aluminium Gold color	Aluminium Gold color	Aluminium Gold color	Aluminium Gold color	Aluminium Gold color	Aluminium Gold color
Limbs bolts	Aluminium Gold color	Aluminium, Black color	Aluminium, Black (Gold) color	Aluminium, Black color	Aluminium, Black (Gold) color	Aluminium, Black color
Neopren Springs	Black	Black	Black	Black	Black	Black
Align plates	Aluminium	Aluminium	Aluminium	Aluminium	Aluminium	Aluminium
Weigh holes Plugs	Optional up to 5 pairs	Optional up to 4 pairs	Optional up to 3 pairs	Optional up to 3 pairs	Optional up to 3 pairs	Optional up to 3 pairs
Optional weights kit	G01-DK6 G03-DK2-TG G04-DK6 G05-DK2 G04-BW-03	G01-DK6 G03-DK2-TG G04-DK6 G05-DK2 G04-BW-03	G01-DK6 G03-DK2-TG G04-DK6 G05-DK2 G04-BW-03	G01-DK6 G03-DK2-TG G04-DK6 G05-DK2 G04-BW-03	G01-DK6 G03-DK2-TG G04-DK6 G05-DK2 G04-BW-03	G01-DK6 G03-DK2-TG G04-DK6 G05-DK2 G04-BW-03
Optional Bare Bow Covers	G01-BW-01 G01-BW-02 G04-BW-04	G01-BW-01 G01-BW-02 G04-BW-04	G01-BW-01 G01-BW-02 G04-BW-04	G01-BW-01 G01-BW-02 G04-BW-04	G01-BW-01 G01-BW-02 G04-BW-04	G01-BW-01 G01-BW-02 G04-BW-04
Optional V-Bar	GVB-03	GVB-03	GVB-03	GVB-03	GVB-03	GVB-03
Riser sleeve	GRS-03-31	GRS-03-31	GRS-03-27	GRS-03-27	GRS-03-27	GRS-03-27
Silver			Red+Blue / Silver Red+Green/Silver			
Black	Gold / Black		Gold / Black		Gold / Black	
Brown		Black / Brown				
Grey			Black / Grey	Black / Grey	Black / Grey	Black / Grey
Blue		Black / Blue	Black / Blue	Black / Blue	Black / Blue	Black / Blue
Red			Black / Red	Black / Red	Black / Red	Black/Red
Purple			Black / Purple		Black / Purple	Black / Purple
Orange			Black / Orange		Black / Orange	
Green			Black / Green		Black / Green	Black / Green
Turquoise					Black / Turquoise	
Yellow					Black / Yellow	

Last updated: June, 12, 2023 - Information here in may vary without notice





WORLD ARCHERY FIELD CHAMPIONSHIPS 2022 YANKTON USA



CINZIA NOZIGLIA **GOLD MEDAL**
BAREBOW WOMEN



WORLD ARCHERY FIELD CHAMPIONSHIPS 2022 YANKTON USA



CINZIA NOZIGLIA **SILVER MEDAL**
BAREBOW MIXED TEAM



WORLD ARCHERY FIELD CHAMPIONSHIPS 2022 YANKTON USA



DAVID JACKSON **GOLD MEDAL**
BAREBOW MEN



WORLD ARCHERY FIELD CHAMPIONSHIPS 2022 YANKTON USA



DAVID JACKSON **BRONZE MEDAL**
BAREBOW MIXED TEAM

GILLO TOP MEDALS 2022-2023



WORLD GAMES 2022 BAREBOW WOMEN
1ST ITA CINZIA NOZIGLIA



ELISA ROMER **3RD PLACE**
COMPOUND WOMEN

JVD OPEN 2022 KINGS OF ARCHERS



GIUSEPPE SEIMANDI **1ST PLACE**
BAREBOW MEN

JVD OPEN 2022 KINGS OF ARCHERS



OLOF JONSSON **1ST PLACE**
BAREBOW MEN

JVD OPEN 2022 KINGS OF ARCHERS



LINA BJORKLUND **1ST PLACE**
BAREBOW WOMEN

LANCASTER CLASSIC 2023



KRISTINA PRUCCOLI **2ND PLACE**
BAREBOW WOMEN

LANCASTER CLASSIC 2023



CINZIA NOZIGLIA **3RD PLACE**
BAREBOW WOMEN

LANCASTER CLASSIC 2023



ERIK JONSSON **3RD PLACE**
BAREBOW MEN

LANCASTER CLASSIC 2023



3D ARCHERY
WORLD CHAMPIONSHIP 2022
TERNI (ITA)



A NOZIGLIA
GOLD MEDAL BAREBOW WOMEN
SILVER MEDAL BAREBOW MIXED TEAM



3D ARCHERY
WORLD CHAMPIONSHIP 2022
TERNI (ITA)



DAVID JACKSON
GOLD MEDAL BAREBOW MEN
SILVER MEDAL BAREBOW MIXED TEAM



3D ARCHERY
WORLD CHAMPIONSHIP 2022
TERNI (ITA)



FREDRIK LUNDMARK
GOLD MEDAL BAREBOW MIXED TEAM



3D ARCHERY
WORLD CHAMPIONSHIP 2022
TERNI (ITA)



GIUSEPPE SEIMANDI
GOLD MEDAL BAREBOW TEAM
BRONZE MEDAL BAREBOW MEN



WORLD ARCHERY FIELD
CHAMPIONSHIPS 2022
YANKTON USA



LINA BJORKLUND
GOLD MEDAL
BAREBOW MIXED TEAM



WORLD ARCHERY FIELD
CHAMPIONSHIPS 2022
YANKTON USA



ERIK JONSSON
GOLD MEDAL
BAREBOW MIXED TEAM



WORLD ARCHERY FIELD
CHAMPIONSHIPS 2022
YANKTON USA



GAUTHE CHRISTINE
BRONZE MEDAL
BAREBOW MIXED TEAM



WORLD ARCHERY FIELD
CHAMPIONSHIPS 2022
YANKTON USA



BOSCHER MARTINA
BRONZE MEDAL
WOMEN TEAM



1ST WORLD GAMES 2022
BAREBOW MEN
SWE **ERIK JONSSON**



2ND WORLD GAMES 2022
BAREBOW MEN
SWE **LEO PETERSSON**



3RD WORLD GAMES 2022
BAREBOW WOMEN
SWE **LINA BJORKLUND**



3RD WORLD GAMES 2022
BAREBOW MEN
USA **RYAN DAVIS**



VIVIA ELAMSSON
3RD PLACE
BAREBOW WOMEN

JVD OPEN 2022
KINGS OF ARCHERS



TATIANA KHRUSTALEVA
2ND PLACE
BAREBOW WOMEN

JVD OPEN 2022
KINGS OF ARCHERS



TIMO DORCHDEWALD
2ND PLACE
BAREBOW MEN

JVD OPEN 2022
KINGS OF ARCHERS



ELISA RONER
BRONZE MEDAL
COMPOUND WOMEN
ANTALYA - TUR
HYUNDAI ARCHERY WORLD CUP STAGE 1
2023



RICARDO SOTO
GOLD MEDAL
RECURVE MIXED TEAM
IX COPA MERENGUE & PAN AMERICAN GAMES CQT
2023



RICARDO SOTO
GOLD MEDAL
RECURVE TEAM
IX COPA MERENGUE & PAN AMERICAN GAMES CQT
2023



ELISA RONER
1ST PLACE
COMPOUND WOMEN
LAS VEGAS
WORLD CUP
INDOOR
WORLD SERIES 2023

SHORT GT RISERS

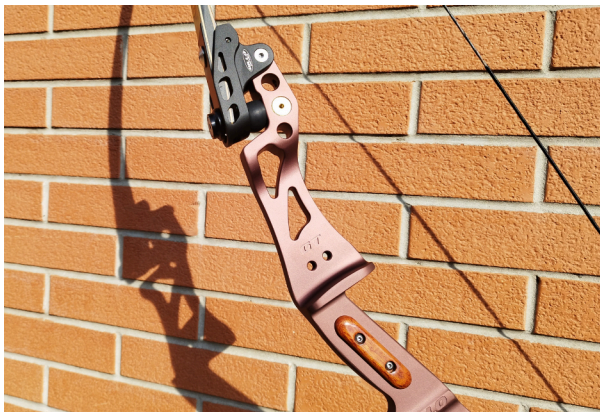
COMPARISON CHART



GILLO GT Short Risers comparison chart

Length	23"			21"			19"	
Model	G3L 23I RH	G3L 23I LH	G3L 23F RH	G3L 21F RH	G3L 21F LH	G3L 21I RH	G3L 19I RH	G3L 19I LH
Model ref	G03L-RSI-23-RH	G03L-RSI-23-LH	G03L-RSF23-RH	G03L-RSF-21-RH	G03L-RSF-21-LH	G03L-RSI-21-RH	G03L-RSI-19-RH	G03L-RSI-19-LH
Model Name	GT 23 ILF	GT 23 ILF	GT 23 Formula	GT 21 Formula	GT 21 Formula	GT 21 ILF	GT 19 ILF	GT 19 ILF
Availability	Running Model	August 2023	Running Model	Running Model	Running Model	Running Model	Running Model	Running Model
Hand	RH	RH	RH	RH	RH	RH	RH	LH
Length	23"	23"	23.5"	21.5"	21.5"	21"	19"	19"
Weight	1280	1280	1350	1290	1290	1260	1200	1200
Riser material	Aluminium	Aluminium	Aluminium	Aluminium	Aluminium	Aluminium	Aluminium	Aluminium
Technology	Milled	Milled	Milled	Milled	Milled	Milled	Milled	Milled
Finishing	Sandblasted anodized	Sandblasted anodized	Sandblasted anodized	Sandblasted anodized	Sandblasted anodized	Sandblasted anodized	Sandblasted anodized	Sandblasted anodized
Limbs Pockets	Aluminium, Black color	Aluminium, Black color	Aluminium, Black color	Aluminium, Black color	Aluminium, Black color	Aluminium, Black color	Aluminium, Black color	Aluminium, Black color
Grip	Wood -Root finish	Wood or 3D Wood	Wood -Root finish	Wood -Root finish	Wood or 3D Wood	Wood -Root finish	Wood -Root finish	Wood or 3D Wood
Clicker plates	Aluminium Gold color	Aluminium Gold color						
Limbs bolts	Aluminium, Black color	Aluminium, Black color	Aluminium, Black color	Aluminium, Black color	Aluminium, Black color	Aluminium, Black color	Aluminium, Black color	Aluminium, Black color
Neopren Springs	Black	Black	Black	Black	Black	Black	Black	Black
Align plates	Aluminium	Aluminium	Aluminium	Brass	Brass	Brass	Brass	Brass
Weigh holes Plugs	Optional up to 2 pairs	Optional up to 2 pairs	Optional 1 pair	Optional 1 pair	Optional 1 pair	Optional 1 pair	Optional 1 pair	Optional 1 pair
Optional weights kit	G03-DK2-TG G05-DK2 G04-BW-03	G03-DK2-TG G05-DK2 G04-BW-03	G03-DK2-TG G05-DK2 G04-BW-03	G03-DK2-TG G05-DK2 G04-BW-03	G03-DK2-TG G05-DK2 G04-BW-03	G03-DK2-TG G05-DK2 G04-BW-03	G03-DK2-TG G05-DK2 G04-BW-03	G03-DK2-TG G05-DK2 G04-BW-03
Optional V-Bar	GVB-03	GVB-03	GVB-03	GVB-03	GVB-03	GVB-03	GVB-03	GVB-03
Riser sleeve	GRS-03-23	GRS-03-23	GRS-03-23	GRS-03-23	GRS-03-23	GRS-03-23	GRS-03-23	GRS-03-23
Gold	Black/Gold							
Black	Gold / Black							
Brown				Black / Brown			Black / Brown	
Grey	Black / Grey	Black / Grey	Black / Grey	Black / Grey	Black / Grey	Black / Grey	Black / Grey	Black / Grey
Blue	Black / Blue	Black / Blue						
Red	Black / Red	Black / Red						
Purple	Black/Purple							
Green	Black / Green		Black / M Green			Black / M Green		

Last updated: June, 12, 2023 - Information here in may vary without notice



G1 - GQ RISERS

COMPARISON CHART



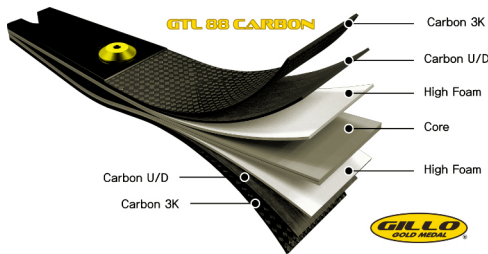
GILLO Risers comparison chart

	25"				23"			
	G4L 25 RH	G4L 25 LH	G14M 25 RH	G14M 25 LH	G1M 25 RH	G1M 25 LH	G4L 23 RH	G4H 23 RH
Model ref	G04L-RS-25-RH	G04L-RS-25-LH	G14M-RS-25-RH	G14M-RS-25-LH	G01M-RS-25-RH	G01M-RS-25-LH	G04L-RS-23-RH	G04H-RS-23-RH
Model Name	GQL 25 Dual	GQL 25	GQM 25	GQM 25	G1M 25	G1M 25	GQL 23	GQ 23 Hunter
Availability	Running model	Running model	Running model	Running model	Running model	Running model	Running model	Running model
Hand	RH	LH	RH	LH	RH	LH	RH	RH
Length	25"	25"	25"	25"	25"	25"	23"	23"
Weight	1290	1290	1280	1280	1360	1360	1190	1190
Riser material	Aluminum	Aluminum	Aluminum	Aluminum	Aluminum	Aluminum	Aluminum	Aluminum
Technology	Milled	Milled	Milled	Milled	Milled	Milled	Milled	Milled
Finishing	Bright Sandblasted anodized	Sandblasted anodized	Sandblasted anodized	Sandblasted anodized	Sandblasted anodized	Sandblasted anodized	Sandblasted anodized	Sandblasted anodized
Grip	G03 Advanced wood	Wood or 3D Wood	Plastic, Grey color	3D Grey color	Plastic, Black color	3D Black color	Wood, multicolor	Wood
Clicker plates	Aluminum Gold color	Aluminum Gold color	3D Gold color	3D Gold color	3D Gold color	3D Gold color	Aluminum Gold color	Aluminum Black color
Limbs bolts	Steel, Titanium Gold plated	Steel, Titanium Gold plated	Stainless Steel	Stainless Steel	Stainless Steel	Stainless Steel	Steel, Titanium Gold plated	Steel, Titanium Black plated
Align plates	Aluminum	Aluminum	Aluminum	Aluminum	Aluminum	Aluminum	Aluminum	Aluminum
Cover					Aluminum, Gold color	Aluminum, Gold color		Brass
Weight holes Plugs	Optional up to 3 pairs	Optional up to 3 pairs	Optional up to 3 pairs	Optional up to 3 pairs	Optional up to 3 pairs	Optional up to 3 pairs	Optional up to 2 pairs	Optional up to 2 pairs
Optional weights kit	G01-DK6 G04-DK6 G03-DK2-TG G05-DK2 G04-BW-03	G01-DK6 G04-DK6 G03-DK2-TG G05-DK2 G04-BW-03	G01-DK6 G04-DK6 G03-DK2-TG G05-DK2 G04-BW-03	G01-DK6 G04-DK6 G03-DK2-TG G05-DK2 G04-BW-03	G01-DK6 G04-DK6 G03-DK2-TG G05-DK2 G04-BW-03	G01-DK6 G03-DK2-TG G03-DK2-TG	G03-DK2-TG G05-DK2 G04-BW-03	G03-DK2-TG G05-DK2 G04-BW-03
Optional Bare Bow Covers	G01-BW-01 G01-BW-02 G04-BW-04	G01-BW-01 G01-BW-02 G04-BW-04	G01-BW-01 G01-BW-02 G04-BW-04	G01-BW-01 G01-BW-02 G04-BW-04	G01-BW-01 G01-BW-02 G04-BW-04	G01-BW-01 G01-BW-02		
Make it L Optional kit					G01-MLK	G01-MLK		
Optional V-Bar	GVB-03	GVB-03	GVB-03	GVB-03			GVB-03	GVB-03
Riser sleeve	GRS-03-27	GRS-03-27	GRS-03-27	GRS-03-27			GRS-03-23	GRS-03-23
Gold	Black / Gold						Yes	
Silver	Black / Silver							
Black	Yes	Yes	Yes	Yes	Yes	Yes	Yes	Yes
Grey			Yes	Yes	Yes	Yes	Yes	Yes
Blue		Yes	Yes	Yes	Yes	Yes	Yes	
Red		Black / Red	Yes	Yes	Yes	Yes	Yes	
Purple			Yes	Yes	Yes	Yes		
Orange			Yes	Yes	Yes	Yes		
Green			Yes	Yes	Yes	Yes	Yes	Yes
Turquoise	Black / Turquoise				Yes	Yes		

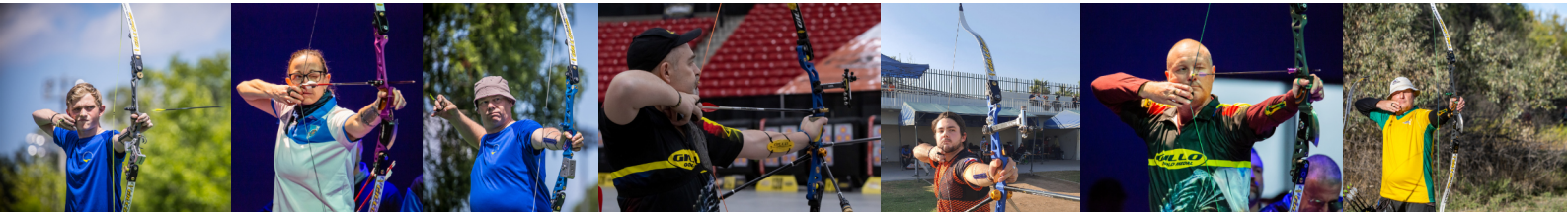
Last updated: February, 27, 2023 - Information here in may vary without notice

LIMBS

GTL.88 CARBON ILF ADVANCED TARGET LIMBS



- Perfect combination with all GILLO Gold Medal risers, in particular with the GT range
- Suitable for all commercially available ILF mount risers
- Available in 70", 68" and 66" lengths on 25" risers
- Carbon + 7-layer Multi-Layer Foam (in the picture on the left layers are specified in detail)
- Increased curvature for maximum speed and softness underneath clickers
- Design studied to make String Walking optimal
- Can be ordered in four weights: 30# - 34# - 38# - 40#



GTL.Q7 ILF ADVANCED TARGET CARBON LIMBS



- Perfect combination with all GILLO Gold Medal risers, in particular with the GT range
- Suitable for all commercially available ILF mount risers
- Available in 70", 68" and 66" lengths on 25" risers
- Carbon + 5-layer Multi-Layer Foam
- Increased curvature for maximum speed and softness underneath clickers
- Design studied to make String Walking optimal
- Can be ordered in four weights: 30# - 34# - 38# - 40#

GTL.Q2

ILF TARGET CARBON - FOAM LIMBS



- Perfect combination with all GILLO Gold Medal risers, in particular with the GT and GX range
- Suitable for all commercially available ILF mount risers
- Available in 70", 68" and 66" lengths on 25" risers
- Fiberglass + Carbon + Foam, with laminate construction
- Increased curvature for maximum speed and softness under clicker
- Design studied to make String Walking optimal
- Can be ordered in five weights: 24# - 28# - 32# - 36# - 40#

GTL.Q3

ILF TARGET CARBON - FOAM LIMBS



- Perfect combination with all GILLO Gold Medal risers, in particular with the GT and GX range
- Suitable for all commercially available ILF mount risers
- Available in 70", 68" and 66" lengths on 25" risers
- Fiberglass + Carbon + Foam, with laminate construction
- Increased curvature for maximum speed and softness under clicker
- Design studied to make String Walking optimal
- Can be ordered in five weights: 26# - 30# - 32# - 34# - 38#

GHOST X

ILF HUNTING CARBON LIMBS



- Limbs designed for hunting
- Perfect match with GQ 23" Hunter, GT 23", GT 21", GT 19", GHOST 19" riser
- Suitable for all commercially available ILF mount risers
- Present only in 68" length (on 25" riser)
- Fiberglass + Carbon + Bamboo
- Traditional curvature
- Orderable in poundages from 34# to 46#, develop from 40# to 52# on 19" riser



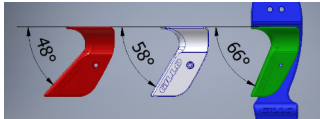
CUSTOMIZATIONS

G03-YG

- New 3D printed grip series suitable for everyone the risers of the GILLO range
- Thickness decreased by 2mm from the original grip GILLUS G1
- 3D printed
- Assorted colors
- Available with 3 different profiles: LOW, MEDIUM, HIGH
- MEDIUM profile grip held the angle optimal than the first standard version



The angles:
 LOW: 66°
 MEDIUM: 58°
 HIGH: 48°



G01-RG
 Colored wooden grips briar MEDIUM



G01-WG
 Colored wooden grips walnut MEDIUM



GBG-YG
 3D printed grip "BALL" by Frangilli



G01-RG
 Colored wooden grips briar HIGH



G01-WG
 Multilayer wood grip MEDIUM



G03-MG
 Multilayer wood grip LOW



GBG-MW
 Wooden grips "BALL" by Frangilli



G03-MG
 Multilayer wood grip MEDIUM

G01-YG

- 3D printed grip
- First version of the standard grip
- Available in RH and LH versions
- Available in MEDIUM and HIGH version



G01-LB

- Preload with locking screw
- Available in 5 different colors
- Suitable for GILLO G1, G2, GQ, Ghost risers



G03-LB

- Preload for GT/GX risers
- Available in 3 different colors



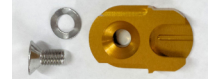
G01-AP-AL

- Alignment plate
- Aluminum 7075
- 11g



G01-AP-BR

- Alignment plate
- Brass
- 24g



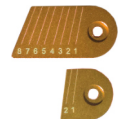
G02-CKK

- 3D plastic clicker plates
- Kit formed by the short and long version
- Available in various colors



G01-CKK

- Aluminum clicker plates
- Available in various colors



G02-PPK

- 3D printed decorative caps
- Available in various colors

GILLO EXTENDERS



GSX-EX-31/41/51

- Extenders for stabilizers
- Anodized aluminum
- Available in Gold and Black versions
- Available in lengths: 3", 4", 5"

GSX-EX-2



- 2" extenders for stabilizer
- Anodized aluminum
- Available in gold color

WEIGHTS AND ADAPTERS

GS6-WF

- Weights for GILLO GS6, GS7, GS8 and GS9 stabilizers, as well as for all stabilizers on the market
- 27 g - grain included
- 24K Gold Plated



GS6-WK4

- Kit of 4 weights for GILLO GS6, GS7, GS8 and GS9 stabilizers, as well as for all the stabilizers on the market
- Wheat included
- 24K Gold Plated



GSX-UA-01

- Universal adapter for stabilizers
- Composed of female 1/4"-20 to female 5/16"-24
- 1 x 1/4"-20 and 5/16"-24 set of steel screws included
- Adds 35g and 1.5" of length to stabilizer



GSX-UA-02

- Universal adapter
- Male 1/4"-20 male 5/16"-24
- With hexagon for 1/8" Allen wrench

GSX-CW

- Disc weights for stabilizers
- 4 colors available: gold, black, purple, blue
- 50 g of weight



FINAL DAMPER GILLO

GSX-FD

- Anodized aluminum in all its parts
- Adaptable to any need for softness and/or hardness thanks to the use of a special silicone ball due to its stability characteristics

V-BAR SYSTEM recurve

GVB-K01

- Flat V-bar at 2 x 45°
- Anodized aluminum (two colors available: gold and black)
- Specifically designed for GILLO GS7, GS6, GS8 and GS9 stabilizer and usable for each stabilizer on the market



GVB-K02 GVB-V22

- V-bar with 3 axis system
- Anodized aluminium, fixed with steel M8 screws and spring washers
- Available in two colors: gold and black
- Available in the version WITHOUT (GVB-V22) or in the version WITH (GVB-K02) central bolt GVB-B11



SIDE JOINT compound



GSJ-K02 GSJ-J22

- Side-Joint with 3-axis system for Compound
- Anodized 7075 aluminum and fixed with steel M8 screws and spring washers
- Available in the version WITHOUT (GSJ-J22) or in the version WITH (GSJ-K02) central bolt

STABILIZERS



- 60 Ton extra stiff carbon tube with finish matt carbon, Hi-Tech
- External diameter: 13mm, for better performance in presence of wind
- Tube thickness: 3.6mm of carbon lattice for extreme stiffness
- 5.0mm of flex @30"/1kg at tip, +-5%
- Black oxidized steel terminal screws, 1/4-20 UNC and 5/16-24 UNF
- Central long rod available in sizes: 26", 28", 30", 32"
- Side rod available in sizes: 10", 12", 15"
- Extender available in sizes: 6"

GS9



- 40 Ton extra stiff carbon tube with finish matt carbon, Hi-Tech
- External diameter: 13mm, for better performance in presence of wind
- Tube thickness: 3.6mm of carbon lattice for extreme stiffness
- 6.0mm of flex @30"/1kg at tip, +-5%
- Black oxidized steel terminal screws, 1/4-20 UNC and 5/16-24 UNF
- Central long rod available in sizes: 28", 30"
- Side rod available in sizes: 10", 12", 15"

GS13



- 40 Ton extra stiff carbon tube with finish matte carbon
- Designed for a useful use for Recurve and Compound
- External diameter: 15mm, for better performance in windy conditions
- Tube thickness: 3.5mm of carbon lattice for extreme stiffness
- 4.2mm of flex @30"/1kg at tip, +-5%
- Black oxidized steel terminal screws, 1/4-20 UNC and 5/16-24 UNF
- Central long rod available in sizes: 26", 28", 30", 32"
- Side rod available in sizes: 10", 12", 15"
- Extender available in sizes: 5", 6"

GS8



- Extra stiff 30 Ton carbon tube with golden filament inside the carbon finish
- Outer diameter: 17mm, matte surface
- Tube thickness: 2mm for greater rigidity
- 5.5mm of flex @30"/1kg at tip, +-5%
- Gold anodized aluminum end caps (19mm)
- Black oxidized steel terminal screws, 1/4-20 UNC and 5/16-24 UNF
- Central long rod available in sizes: 26", 28", 30", 32"
- Side rod available in sizes: 10", 12", 15"
- Extender available in sizes: 5", 6"

GS6



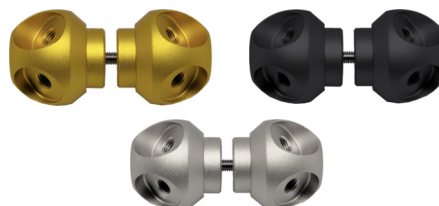
- Super stiff carbon tube
- Outer diameter: 17mm, matte surface
- Tube thickness: 1mm for high rigidity
- 8.5mm of flex @30"/1kg at tip, +-5%
- Gold anodized aluminum end caps (19mm)
- Black oxidized steel terminal screws, 1/4-20 UNC and 5/16-24 UNF
- Central long rod available in sizes: 28", 30"
- Side rod available in sizes: 10", 12"

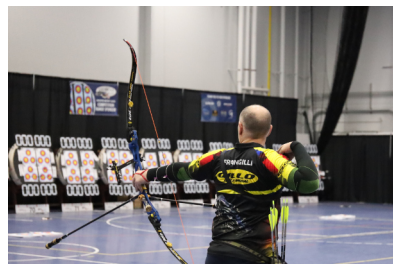
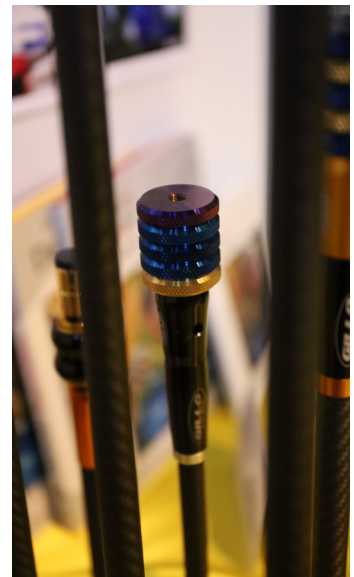
GS7

THE "UFO" V-BAR SYSTEM

GVB-K03

- Designed for use in the slot found in GILLO GT, GQ, and G2 risers
- It has 4 different angles on the horizontal plane: 90°/80°/70°/60°
- Presents infinite angles in the vertical plane
- Up to 2 UFO systems can be used on the GT, GQ and G2 risers
- Specially created for GILLO GS6, GS7, GS8 and GS9 stabilizers
- It can also be used with any other stabilizer on the market that does not exceed 20mm in diameter at the base
- Total weight 140g





WEIGHTS Barebow



G01-BW-01-EG
EAGLE weight
Artist:
Salvatore Gagliano



G01-BW-01-DG
DRAGON weight
Artist:
Salvatore Gagliano



G01-BW-02-DG
DRAGON side cheeks
Artist:
Salvatore Gagliano



G01-BW-02-CO
COBRA side cheeks
Artist:
Salvatore Gagliano



G01-BW-01-AL
Symmetrical weight
Aluminum



G01-BW-02-AAA
Weight divided by 3
aluminum parts



G01-BW-02-SAS
Weight divided into
3 parts:
central aluminum
and steel sides



G01-BW-01-CO
COBRA weight
Artist:
Salvatore Gagliano

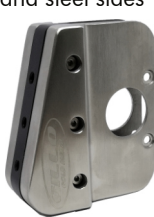
Available in aluminum
and bronze



G01-BW-04-AAA
Weight divided by 3
aluminum parts



G01-BW-04-ASA
Weight divided into
3 parts:
steel center
and aluminum sides



G01-BW-04-SAS
Weight divided into
3 parts:
central aluminum
and steel sides



G01-BW-04-SSS
Weight divided by 3
steel parts

THE BLADE

The line of weights called BLADE was born from the idea of uniting the need to diversify the distribution of weight on the bare arch and the desire to "play". The creation of 3 separate parts that can compose, move, transform based on the needs and desires of the archer, he gave the idea of "going out from the blueprints". Inspired by just the blade of a sword, this weight can be placed in two different ways and is available in aluminum or steel.



Here are the best known combinations (certainly not all) of weights created by the union of one or more GILLO Gold Medal elements:

G01-BW-01-AL	270 g	G01 A-BLSS-A	870 g	G04-BW-04-AAA	350 g	G04-BW-03-AL	220 g
G01-BW-02-AAA	400 g	G01 DG-S centr	970 g	G04 A-BLAL-A	450 g	G04-BW-03-SS	630 g
G01-BW-02-ASA	590 g	G01-BW-02-SSS	1220 g	G04-BW-04-ASA	540 g		
G01-BW-02-AAS	710 g	G01 S-BLSS-S	1500 g	G04-BW-04-SAS	800 g		
G01 WF-A centr	840 g			G04-BW-04-SSS	990 g		

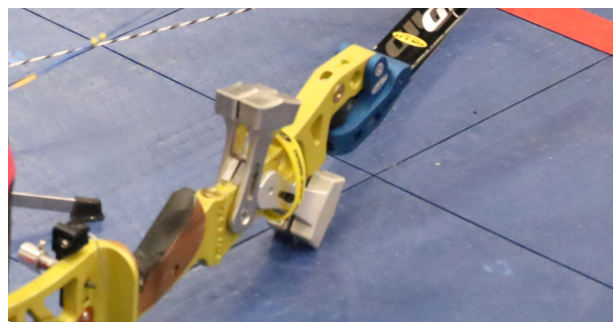
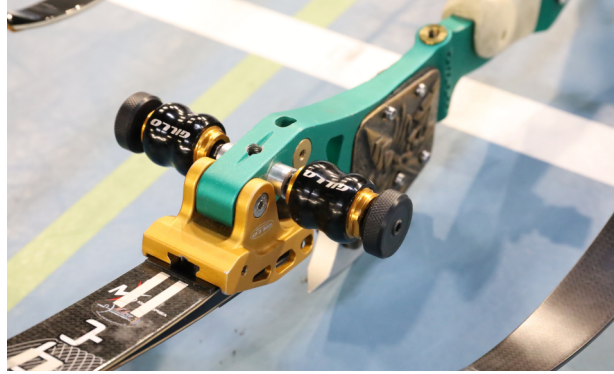
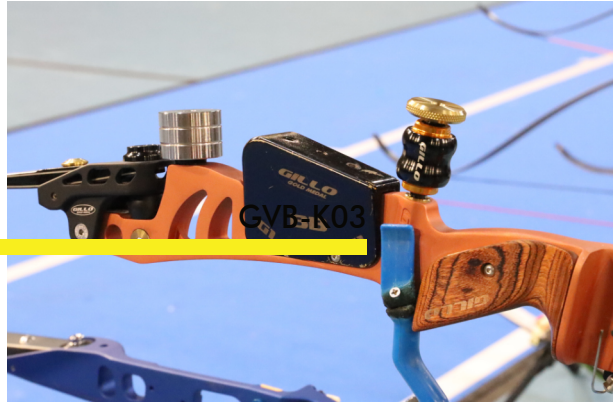
THE HAMMERS

The GILLO "hammers" are born from the desire to push beyond the limit to which the archer was used to. What if there was a weight that you could infinitely orient and adjust to make balance of your perfect bow? Inspired by the tool of the same name, this weight can be positioned in infinite positions and is available in aluminum or steel. With the possibility of combining them.



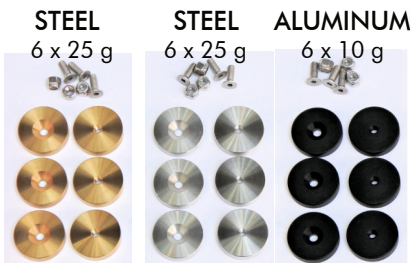
THE WHEELS

With the change in World Archery regulations in the 2022 a new way of conceiving positioning is born of weights on the riser. Exceptional! Other customizations possible. How to create a special weight and that is not the simple unidirectional weight? Here is The Wheels!



DK6

The DK6 weights are specifically 6 weights which can be placed in the special housings in the lower part of any GILLO riser. From the first riser made by GILLO Gold Medal was possible intervene on weight distribution so that it becomes one absolute customization. It was born first for recurve bow, then for bare bow.



DK2



ACCESSORIES



GHT-20
Hat with visor in Black



GHT-30
Fisherman hat in Navy Blue



GHT-10
Hat with visor in Yellow



GHT-30
Fisherman hat in White



GBS-01-YL
Gillo woven Tip/Limb Bowstringer for Recurve Bows



GBP-03
- Bow backpack, from shoulder
- Can hold 2 complete bows

GBP-04
- Bow backpack, from shoulder
- Can hold 2 complete bows, full lengths
- Numerous pockets for accessories
- Tube for arrows included



GQV-06
- Three compartments for arrows
- 4 pockets for accessories
- Adjustable belt included
- Available in version RH and LH in 5 colors (Blue, Red, Military Green, Purple and Yellow)
- Extra pocket included





GHT-10

- Shaped piggy bank of piglet
- Available only in Yellow colour



GPD-01-8

- USB pendrive
- Capacity 8GB
- Containing the catalogue GILLO 2023



BINOCULAR GOP-142

- Binocular 10x42
- Short focus
- Weight 585 g
- Waterproof, Fog proof



SPOTTING SCOPE GOP-336

- 12-36 x 60 scope
- Small size
- Weight 520g
- Rain proof, with protective rubber
- Small tripod included



GKP-01-YL

- Gillo limbs protector
- Can also be used as a keychain



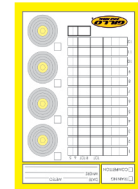
GUM-07

- Folding umbrella with case
- Available in Yellow color



SCORE BOOK

- Scorebook
- Reversible Targa/Field
- A6 format



GBP-01

- Backpack with 24 liter capacity
- Available in Yellow color
- Adjustable straps



GWB-08

- Aluminum bottle
- Capacity 800ml



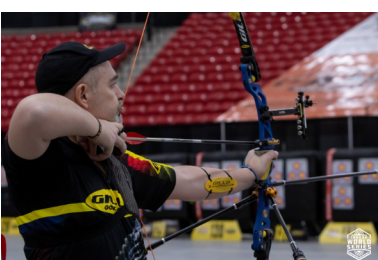
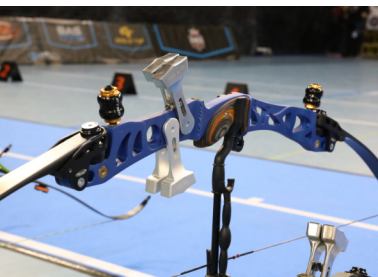
GLO-PR-34 Thread Locker - Low Strenght

GGL-UF-12 Ultra Fletch CA glue

GGL-FF-20 Faster-Fletch Accelerator

GGL-DB-10 Un-Fletch solvent to remove the CA glues

GLU-LI-10 Lithium grease for lubrication



All news:

facebook.com/gillogoldmedal



Register to [Gillo Gold Medal Users Group](#)
To get support from the Community

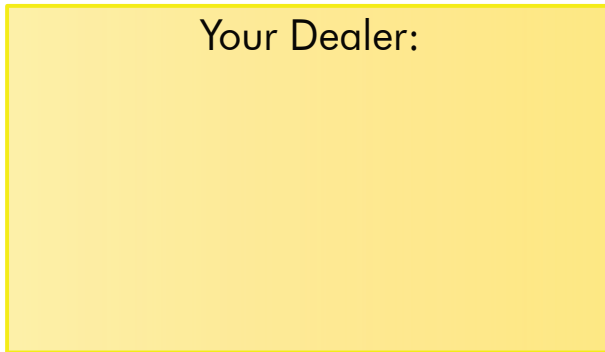


Is a Registered Brand of
API - Archery Productions Italy Srl
Via Varese 76/E
21013 Gallarate VA
ITALY

Ph: +39 0331-1527056
E-mail: info@gilloarchery.it

www.gilloarchery.it

Your Dealer:



Proud Associate of World Archery

Features of the products herein may vary without notice

Graphic Design by CFD di Carla Frangilli 06.2023

#GilloChangingTheGame